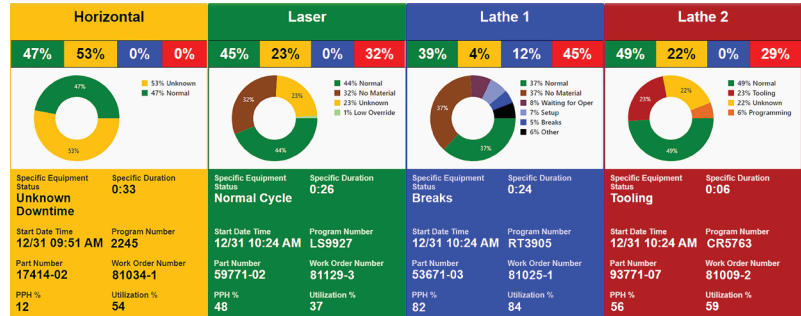


## OEE Machine Monitoring Utilization and Downtime Tracking

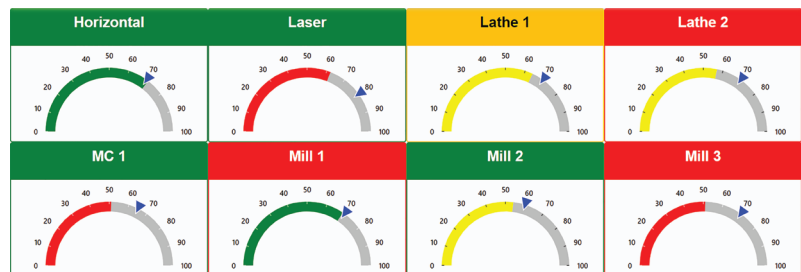
### Modernize

- Cloud or On-Premise
- Month-to-Month
- Powerful, Flexible, and Scalable
- Mobile Access
- Text, Email and Microsoft Teams Notifications



### Change The Culture

- Manage by Fact
- Empower Operators
- Be Proactive, Rather than Reactive
- Let the Data Work for You
- Take Your Business to the Next Level



### The ROI of Machine Monitoring

Saving one hour of downtime per month per machine will pay for the DataXchange monthly fee. With this type of return, payback usually comes within the first few days of the month, and this is simply based on downtime savings. Savings from improved quality, customer satisfaction, and lower tooling costs, among other benefits, are all in addition to the savings from reducing downtime. Visit <https://scytec.com> for a full pricing and ROI calculator and for more details.

### No Large Upfront Costs or Long-Term Contracts

Scytec DataXchange provides powerful yet flexible equipment monitoring with a low setup fee and low monthly payments using the Cloud implementation. No long-term commitments are required, and no minimum size order. DataXchange can be installed on-premise as well. Visit <https://scytec.com> for a full pricing and ROI calculator and for more details.

## Using the Data

---

### ***Dashboards, Reporting, and Charting***

The dashboard can be configured to present the data in many ways. End users can display shop floor layouts, browser-based content such as Power BI or Microsoft 365 documents, and webcams, all side by side with production data. An unlimited number of screens can be defined, which can be configured to rotate, filtered by certain equipment or by certain statuses making the Real-Time Viewer a powerful visual management tool.

### **Email and Text Notifications**

---

Let the Data work for you. Receive notifications if the machine is running in a low feed rate override for more than five minutes, or if the machine is sitting idle for more than fifteen minutes during an active shift. The notifications are configurable and unlimited, supplying a powerful tool to proactively address issues before they become a real problem.

### **Collecting Data**

---

#### ***MTConnect, Fanuc FOCAS, OPC UA, Modbus TCP***

Scytec DataXchange supports Ethernet-based protocols such as Fanuc FOCAS, OPC UA, MTConnect, and Modbus TCP supplying multiple collection options reducing or eliminating hardware needed for collecting data. Collect over Ethernet from a wide range of CNC, PLCs, and much more.

#### ***iPads, Android, Windows Tablets, and Hardware***

Older and manual machines can use cost-effective hardware to collect from voltage and current signals while tablets or PCs can be used for entry of downtime reasons as well as recording other shop floor data.

#### ***Track Utilization, Part Numbers, Part Counts, and Alarms***

View machine utilization against targets, part numbers and part counts against ideal time, along with reports and charts for alarm occurrences and durations. View everything from basic utilization to full OEE.

### **Data**

---

- Utilization
- Feed Rate, Rapid and Spindle Overrides
- Alarms Activity
- Time Spent in M0 and M1
- Downtime Reasons
- Part Numbers and Part Counts

### **Powerful Collection Rules**

---

- Define Your Own Collection Rules
- Trigger Email and Text Notifications
- Display Messages on Dashboard
- Integrate with External Systems
- Let the System Grow with You

### **Connectivity**

---

- MTConnect
- Fanuc FOCAS
- OPC UA
- Modbus TCP
- Tablets and PCs
- Hardware